



## Revolving Stage Turntables

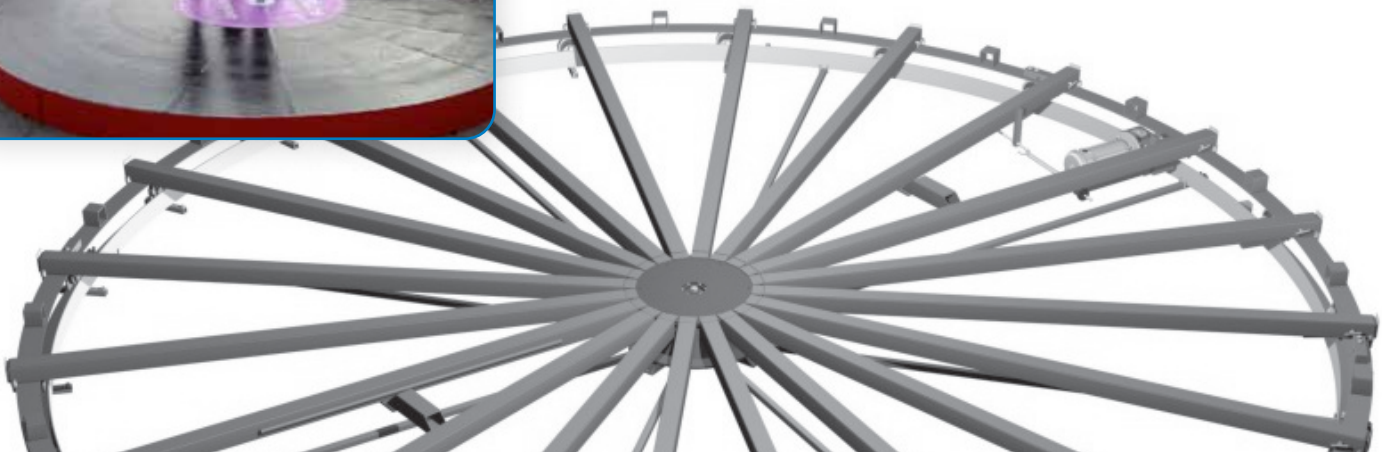
A Movetech UK revolving stage is built to a unique design that provides a stable, high capacity rotating platform.

Whether you want to add excitement to your retail or exhibition display, create spectacular film sequences, produce dynamic TV commercials or wow your audience at your product launch, there's probably a standard Movetech UK revolving stage that will meet your needs. And if there isn't, we can build one to your exact specification.

### Available in diameters from 1m to 33m

Available in diameters from 1m to 33m, in 1m increments, Movetech UK revolving stages are used across the world in car showrooms, concert venues, conference presentations, exhibition halls, fashion shows, film sets, theatre productions, TV shows, and museum and heritage visitor centres.

You can move your audience or move your merchandise; you can create stunning music videos, or add drama to live theatre, events and opera.





## Specifications






Product code	Product description	Max. display properties			Power Consumption (watts)**
		Diameter (m)	Height (m)	Capacity* (kg)	
D-008-020	Revolving Stage Turntable - 2m diameter	2	2	1,000	750
D-008-025	Revolving Stage Turntable - 2.5m diameter	2.5	2	1,000	750
D-008-030	Revolving Stage Turntable - 3m diameter	3	2	1,500	750
D-008-040	Revolving Stage Turntable - 4m diameter	4	4	1,500	750
D-008-045	Revolving Stage Turntable - 4.5m diameter	4.5	4	1,500	750
D-008-050	Revolving Stage Turntable - 5m diameter	5	4	3,000	1500
D-008-060	Revolving Stage Turntable - 6m diameter	6	5	3,000	1500
D-008-070	Revolving Stage Turntable - 7m diameter	7	5	3,000	1500
D-008-080	Revolving Stage Turntable - 8m diameter	8	5	4,000	3000
D-008-100	Revolving Stage Turntable - 10m diameter	10	5	4,000	3000

All Movetech UK revolving stage turntables are 300mm in height. For more product information, please contact our Sales and Technical teams.

\* Maximum evenly distributed load | \*\* Power consumption measured in watts (excluding slip rings)

**Larger than 10m?** Contact us for more information on revolving stage turntables above 10m in diameter and we will be happy to help you.

## Useful Information

-  **Rotating direction:** Clockwise or Anti-clockwise (user defined).
-  **Speed of rotation:** Variable speed, approximately 0.2rpm to 1.2rpm (speed range dependent on unit).
-  **Supply:** Mains powered featuring 10 amp slip rings. UK 3-pin plug (alternatives available).
-  **Power consumption:** See above table under heading 'Power Consumption' (excludes slip rings).
-  **Decks:** Unfinished 18mm (nominal) plywood decks are available (contact us for more details).



## Rental Service

Our reliable and cost effective rental service is widely used for exhibitions and live events, TV commercials, dramas and films, music videos, product launches and reveals; anything, in fact, where you need movement for a one-off, short term project.

Our rental movements range from simple, lightweight product display carousels through to large revolving stage turntables for music and other live events – and everything in between.

Whatever you need, we'll discuss your requirements with you and, if the diameters and capacities of our standard rental revolves don't quite match, we'll offer to tailor a unit to suit your needs.

Options may include static centre, oscillation, timed or positional hesitation or, in the case of a revolving stage turntable we have optional DMX control should you need it.



### You're in good company with our revolving stage turntables

With 60 years experience behind us, we offer excellent customer service and superb product quality - our products often outlive their design life, and many units are still working after tens of years in service. With a first class rental team to match, we supply revolving stage turntables to the biggest names in the industry.



For more information, contact us today, and our sales and technical teams will be more than happy to help you.

Buy a wide range of our products online at [www.movetechukshop.co.uk](http://www.movetechukshop.co.uk)



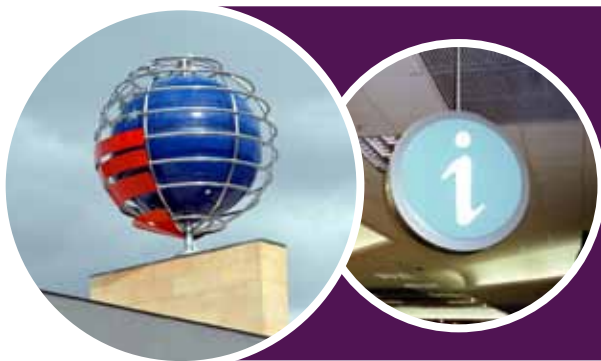




## You might also be interested in...

### Large Carousel Turntables

Our Large Carousel range are well suited to generating simple, but unique, full circular platform displays, or they can be combined with other movement in our range and, for instance, imaginative lighting effects, to create something really special that stops customers in their tracks.



### Revolving Signs

A revolving sign mechanism from Movetech UK can give you the competitive edge. Ideal for a wide variety of locations, both indoors and out, a revolving sign will attract attention, whether inside a shopping mall, an exhibition or on top of a multi-storey building.

### Mini Carousels

Our Mini Carousel turntables are well suited to generating simple, full circular platform displays. They can also be combined with other movements in our range. For instance, imaginative lighting effects, to create something really special that stops customers in their tracks.



### Small Carousel Turntables

Our small carousel range includes the Mini Carousel, B25 range and B200 range. The B25 range is a fully finished, versatile and reliable mains powered turntable range, ideal for creating compact window or counter displays. The B200 range offers heavier duty display turntables suitable for more substantial displays.



## Data Sheet - Merlin Major 21 - Invisible Turntable

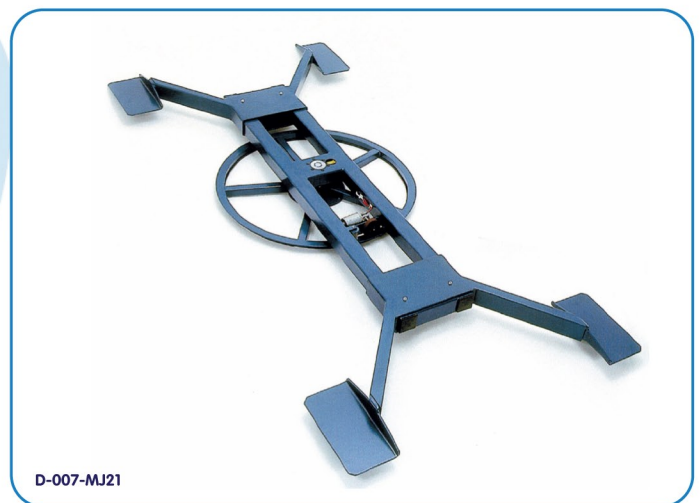
### Merlin Major 21 - Invisible Turntable

The Merlin Major 21 car revolve is virtually invisible in operation, allowing vehicles to be rotated as if by magic. Used across the world by major car manufacturers in car showrooms, exhibitions and for product launches, the Merlin Major 21 combines eye-catching movement with ease of installation.

Designed to rotate the majority of contemporary vehicles, the revolve is ideal for turning both smaller family sized saloons and larger prestige marques up to 2,500kg in weight. This flexibility ensures that a full vehicle stock can be rotated, enabling attractive yet cost-effective displays to be created.

Totally portable and requiring no floor fixing, the robust, compact, versatile and extremely smooth running Merlin Major 21 can even be used outdoors, operating from the car's own 12 volt battery, opening it up for forecourt use, launch events, special vehicle brand displays or promotions at the local shopping mall.

Like the Olympian 4.5 and revolving stages, the Merlin features 5 amp slip rings to provide an electrical connection to the rotating element, thereby enabling further lighting and other special effects.







## Merlin Major 21 Specifications

> Capacity:	2500kg vehicle
> Maximum wheelbase:	3353mm
> Minimum wheelbase:	1930mm
> Maximum track:	1575mm
> Minimum track:	1194mm
> Base diameter:	1000mm
> Power consumption (without slip rings):	30W
> Fuse rating:	5A
> Shipping weight:	314kg
> Shipping pack size (LxWxH):	2280x1170x400mm
> Power requirements:	220/240v, AC 50/60 Hz. Ph. 1
> Power alternative:	110v, AC 50/60 Hz. Ph. 1
> Power option:	12v, DC (battery)
> Mains lead:	6m, 3-core flex
> Slip ring capacity:	5A 220/240v AC Ph. 1
> Finish:	Blue hammer finish
> Speed:	Nominal 0.6 revolutions per minute

**Safety is paramount,  
 which is why the  
 turntable has been  
 designed to stop  
 upon the slightest  
 obstruction.**





## Alternative Solutions

### Revolving Stages

Movetech UK also offers a large range of revolving stages, providing full platform revolves from 1m to 10m in diameter, 300mm high; these can be flush-fitted into a showroom floor or mounted in a plinth on top of an existing floor. For more information see the Revolving Stage Data Sheet or ring Movetech UK on 01204 537 680.



### Olympian

Movetech UK also offers the Olympian Turntable, a 4.5m diameter, 2 tonne capacity full platform revolve designed with the car showroom in mind. For more information see the Olympian Data Sheet or ring Movetech UK on 01204 537 680.



### Motorcycle Turntables

Movetech UK offers a wide range of turntables suitable for rotating motorcycles. The range includes both floor-standing and flush-fitted, to carry just one motorcycle or a range of motorcycles for larger displays. For more information see the Motorcycle Turntable Data Sheet or ring Movetech UK on 01204 537 680.



## Rental Solutions

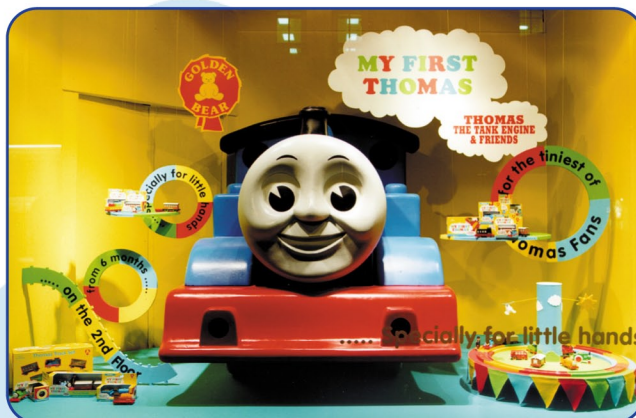
Movetech UK offers a reliable, cost effective worldwide rental service for many of its movement solutions. This is particularly suitable where there is a short term requirement. Our rental units range from simple lightweight product display carousels through to revolving stages for major music and promotional events; this comprehensive rental stock includes a large range of automotive revolves.

If the diameters and capacities of our rental units don't quite meet your requirements, or you would like options such as motion control, a static centre, oscillation, timed or positional hesitation, we can tailor units to suit your needs. We also offer a complete worldwide delivery, installation and removal service. Please call our Rental Hotline to reserve an automotive revolve now on 01204 537 682.



## Can't find what you are looking for?

Movetech UK's range extends to smaller battery and solar powered movement as well as much larger units. The product portfolio includes off-the-shelf revolving stages up to 33m in diameter, and Movetech UK also offers a bespoke design and build service to cater for all customers needs.



In addition, an economical rental service is available. To discuss your requirements or for further information please contact Movetech UK - 01204 525626 - info@movetechuk.com - www.movetechuk.com



## Data Sheet - Olympian

### Olympian

The Olympian Turntable is a 4.5m diameter 2 tonne capacity full platform revolve designed with the car showroom in mind.

The Olympian has carved a distinctive niche for itself in car showrooms and exhibition halls across the world because it combines elegance with ease of installation. The unit's low profile allows it to be installed on top of an existing showroom floor, and it comes fully finished with an attractive decorative top.

This completely stable full platform revolve provides great value for money, potentially increasing car sales by creating the excitement of a motor show in the display area.



D-007-OL45B



D-007-OL45B



D-007-OL45B



D-007-OL45B



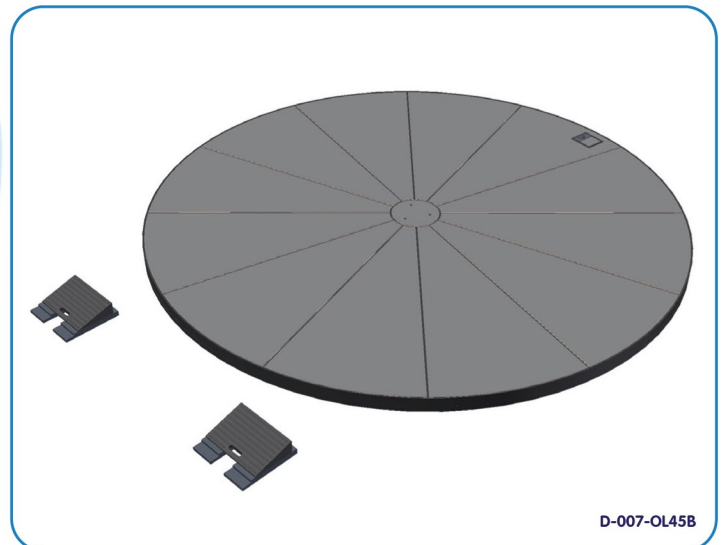


## Olympian Specification

> Capacity:	2000kg
> Diameter:	4.5m
> Top:	Completely finished with grey melamine-faced MDF deck boards
> Level:	Flat plinth design (no raised areas in the top surface)
> Height:	Low profile - only 130mm high
> Skirt:	Black plastic skirt to create an even, clean finish
> Ramps:	Supplied with ramps to load the car
> Remote:	Supplied with hand-held on/off remote
> Power consumption:	200 watts (excluding slip rings)
> Power requirements:	220/240v, AC 50/60 Hz. Ph 1
> Power alternative:	110v, AC 50/60 Hz. Ph. 1
> Slip ring capacity:	5 amp slip rings provide 240v to the rotating surface
> Speed:	Variable speed control
> Direction:	Switchable clockwise and anti-clockwise motion



Contact Movetech UK now and find out how we can assist you to use movement to attract prospective customers.





## Alternative Solutions

### Merlin Major

Movetech UK also offers the Merlin Major 21 car turntable, designed to rotate the car 'invisibly' inside or out. For more information see the Merlin Major 21 Data Sheet or ring Movetech UK on 01204 537 680.



### Revolving Stages

Movetech UK also offers a large range of revolving stages providing full platform revolves from 1m to 10m in diameter, 300mm high; these can be flush-fitted into a show room floor or mounted in a plinth on top of an existing floor. For more information see the Revolving Stage Data Sheet or ring Movetech UK on 01204 537 680.



### Motorcycle Turntables

Movetech UK offers a wide range of turntables suitable for rotating motorcycles. The range includes both floor-standing and flush-fitted units, to carry just one motorcycle or a range of motorcycles for larger displays. For more information see the Motorcycle Turntable Data Sheet or ring Movetech UK on 01204 537 680.



### Rental Solutions

Movetech UK offers a reliable, cost effective worldwide rental service for many of its movement solutions. This is particularly suitable where there is a short term requirement. Our rental units range from simple lightweight product display carousels through to revolving stages for major music and promotional events. This comprehensive rental stock includes a large range of automotive revolves up to 10m in diameter.



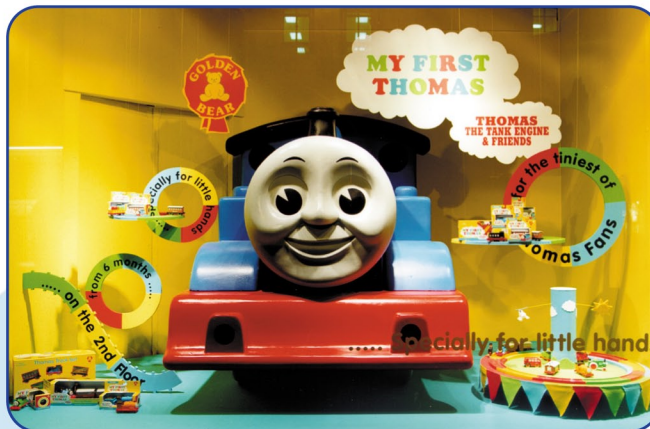
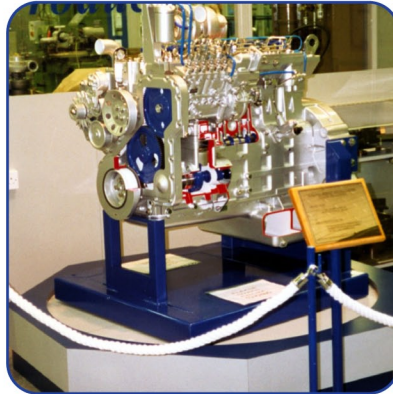
If the diameters and capacities of our rental units don't quite meet your requirements, or you would like options such as motion control, a static centre, oscillation, timed or positional hesitation, we can tailor units to suit your needs. We also offer a complete worldwide delivery, installation and removal service. Please call our Rental Hotline to reserve an automotive revolve now on 01204 537 682.





## Can't find what you are looking for?

Movetech UK's range extends to smaller battery and solar powered movement as well as much larger units. The product portfolio includes off-the-shelf revolving stages up to 33m in diameter, and Movetech UK also offers a bespoke design and build service to cater for all customers needs.



In addition, an economical rental service is available. To discuss your requirements or for further information please contact Movetech UK - 01204 525626 - info@movetechuk.com - www.movetechuk.com