

Data Sheet - Olympian

Olympian

The Olympian Turntable is a 4.5m diameter 2 tonne capacity full platform revolve designed with the car showroom in mind.

The Olympian has carved a distinctive niche for itself in car showrooms and exhibition halls across the world because it combines elegance with ease of installation. The unit's low profile allows it to be installed on top of an existing showroom floor, and it comes fully finished with an attractive decorative top.

This completely stable full platform revolve provides great value for money, potentially increasing car sales by creating the excitement of a motor show in the display area.



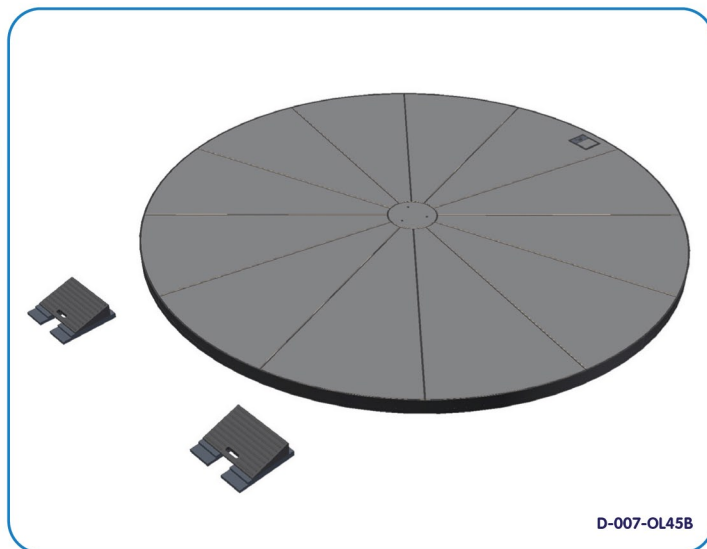


Olympian Specification

> Capacity:	2000kg
> Diameter:	4.5m
> Top:	Completely finished with grey melamine-faced MDF deck boards
> Level:	Flat plinth design (no raised areas in the top surface)
> Height:	Low profile - only 130mm high
> Skirt:	Black plastic skirt to create an even, clean finish
> Ramps:	Supplied with ramps to load the car
> Remote:	Supplied with hand-held on/off remote
> Power consumption:	200 watts (excluding slip rings)
> Power requirements:	220/240v, AC 50/60 Hz. Ph 1
> Power alternative:	110v, AC 50/60 Hz. Ph. 1
> Slip ring capacity:	5 amp slip rings provide 240v to the rotating surface
> Speed:	Variable speed control
> Direction:	Switchable clockwise and anti-clockwise motion



Contact Movetech UK now and find out how we can assist you to use movement to attract prospective customers.



Alternative Solutions

Merlin Major

Movetech UK also offers the Merlin Major 21 car turntable, designed to rotate the car 'invisibly' inside or out. For more information see the Merlin Major 21 Data Sheet or ring Movetech UK on 01204 537 680.



Revolving Stages

Movetech UK also offers a large range of revolving stages providing full platform revolves from 1m to 10m in diameter, 300mm high; these can be flush-fitted into a show room floor or mounted in a plinth on top of an existing floor. For more information see the Revolving Stage Data Sheet or ring Movetech UK on 01204 537 680.



Motorcycle Turntables

Movetech UK offers a wide range of turntables suitable for rotating motorcycles. The range includes both floor-standing and flush-fitted units, to carry just one motorcycle or a range of motorcycles for larger displays. For more information see the Motorcycle Turntable Data Sheet or ring Movetech UK on 01204 537 680.



Rental Solutions

Movetech UK offers a reliable, cost effective worldwide rental service for many of its movement solutions. This is particularly suitable where there is a short term requirement. Our rental units range from simple lightweight product display carousels through to revolving stages for major music and promotional events. This comprehensive rental stock includes a large range of automotive revolves up to 10m in diameter.

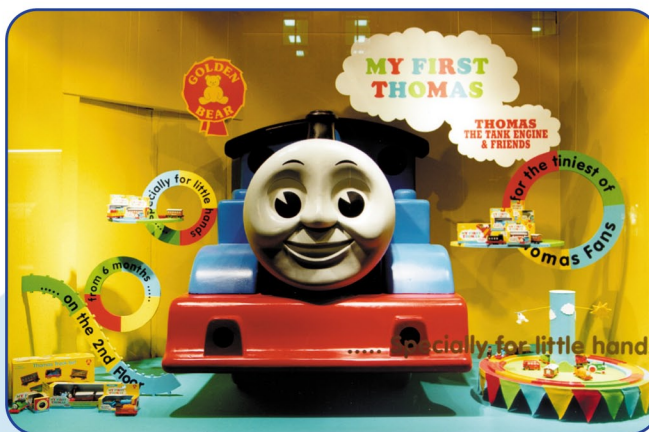
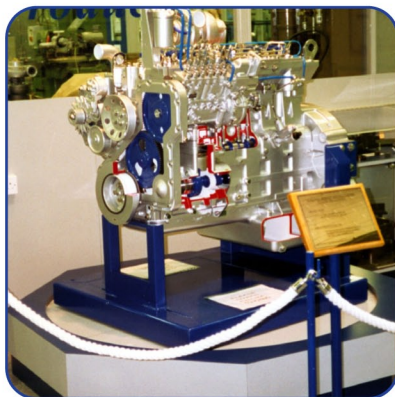


If the diameters and capacities of our rental units don't quite meet your requirements, or you would like options such as motion control, a static centre, oscillation, timed or positional hesitation, we can tailor units to suit your needs. We also offer a complete worldwide delivery, installation and removal service. Please call our Rental Hotline to reserve an automotive revolve now on 01204 537 682.



Can't find what you are looking for?

Movetech UK's range extends to smaller battery and solar powered movement as well as much larger units. The product portfolio includes off-the-shelf revolving stages up to 33m in diameter, and Movetech UK also offers a bespoke design and build service to cater for all customers needs.



In addition, an economical rental service is available. To discuss your requirements or for further information please contact Movetech UK - 01204 525626 - info@movetechuk.com - www.movetechuk.com