

Data Sheet - Merlin Major 21 - Invisible Turntable

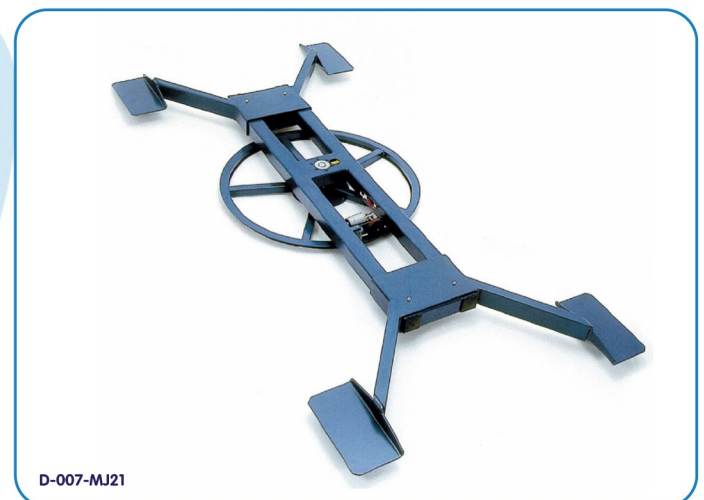
Merlin Major 21 - Invisible Turntable

The Merlin Major 21 car revolve is virtually invisible in operation, allowing vehicles to be rotated as if by magic. Used across the world by major car manufacturers in car showrooms, exhibitions and for product launches, the Merlin Major 21 combines eye-catching movement with ease of installation.

Designed to rotate the majority of contemporary vehicles, the revolve is ideal for turning both smaller family sized saloons and larger prestige marques up to 2,500kg in weight. This flexibility ensures that a full vehicle stock can be rotated, enabling attractive yet cost-effective displays to be created.

Totally portable and requiring no floor fixing, the robust, compact, versatile and extremely smooth running Merlin Major 21 can even be used outdoors, operating from the car's own 12 volt battery, opening it up for forecourt use, launch events, special vehicle brand displays or promotions at the local shopping mall.

Like the Olympian 4.5 and revolving stages, the Merlin features 5 amp slip rings to provide an electrical connection to the rotating element, thereby enabling further lighting and other special effects.





Merlin Major 21 Specifications

> Capacity:	2500kg vehicle
> Maximum wheelbase:	3353mm
> Minimum wheelbase:	1930mm
> Maximum track:	1575mm
> Minimum track:	1194mm
> Base diameter:	1000mm
> Power consumption (without slip rings):	30W
> Fuse rating:	5A
> Shipping weight:	314kg
> Shipping pack size (LxWxH):	2280x1170x400mm
> Power requirements:	220/240v, AC 50/60 Hz. Ph. 1
> Power alternative:	110v, AC 50/60 Hz. Ph. 1
> Power option:	12v, DC (battery)
> Mains lead:	6m, 3-core flex
> Slip ring capacity:	5A 220/240v AC Ph. 1
> Finish:	Blue hammer finish
> Speed:	Nominal 0.6 revolutions per minute

**Safety is paramount,
which is why the
turntable has been
designed to stop
upon the slightest
obstruction.**



Alternative Solutions

Revolving Stages

Movetech UK also offers a large range of revolving stages, providing full platform revolves from 1m to 10m in diameter, 300mm high; these can be flush-fitted into a showroom floor or mounted in a plinth on top of an existing floor. For more information see the Revolving Stage Data Sheet or ring Movetech UK on 01204 537 680.



Olympian

Movetech UK also offers the Olympian Turntable, a 4.5m diameter, 2 tonne capacity full platform revolve designed with the car showroom in mind. For more information see the Olympian Data Sheet or ring Movetech UK on 01204 537 680.



Motorcycle Turntables

Movetech UK offers a wide range of turntables suitable for rotating motorcycles. The range includes both floor-standing and flush-fitted, to carry just one motorcycle or a range of motorcycles for larger displays. For more information see the Motorcycle Turntable Data Sheet or ring Movetech UK on 01204 537 680.



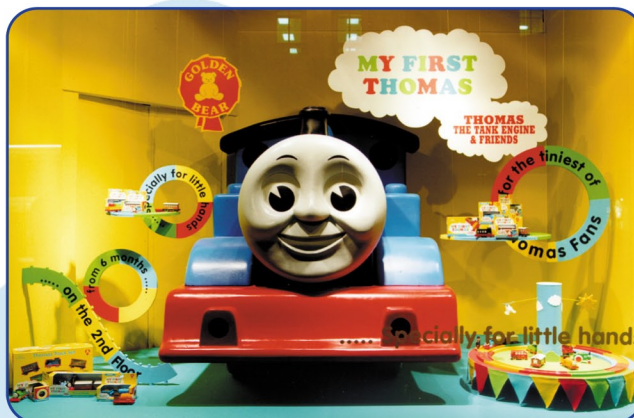
Rental Solutions

Movetech UK offers a reliable, cost effective worldwide rental service for many of its movement solutions. This is particularly suitable where there is a short term requirement. Our rental units range from simple lightweight product display carousels through to revolving stages for major music and promotional events; this comprehensive rental stock includes a large range of automotive revolves.

If the diameters and capacities of our rental units don't quite meet your requirements, or you would like options such as motion control, a static centre, oscillation, timed or positional hesitation, we can tailor units to suit your needs. We also offer a complete worldwide delivery, installation and removal service. Please call our Rental Hotline to reserve an automotive revolve now on 01204 537 682.

Can't find what you are looking for?

Movetech UK's range extends to smaller battery and solar powered movement as well as much larger units. The product portfolio includes off-the-shelf revolving stages up to 33m in diameter, and Movetech UK also offers a bespoke design and build service to cater for all customers needs.



In addition, an economical rental service is available. To discuss your requirements or for further information please contact Movetech UK - 01204 525626 - info@movetechuk.com - www.movetechuk.com